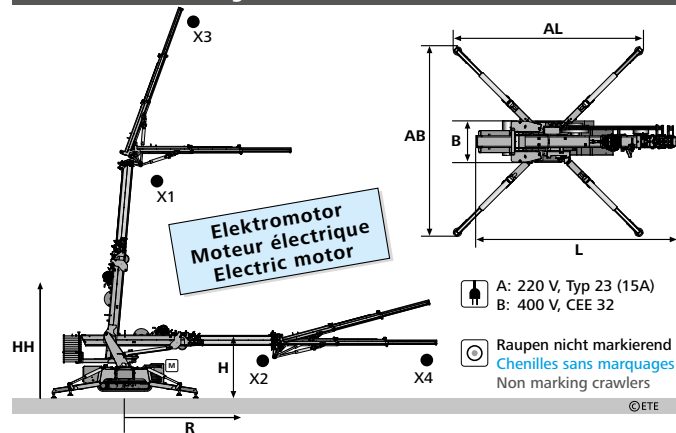













Minikrane / Mini grues / Mini cranes

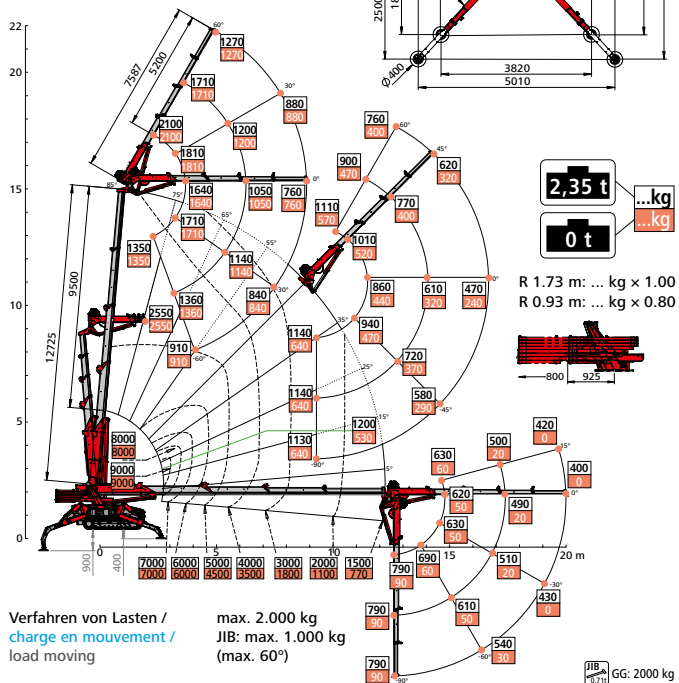
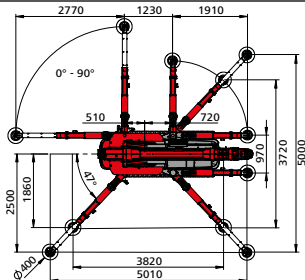
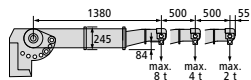


	Typ	L [m]	B [m]	H [m]	 M [t]			AL [m]	AB [m]	
5810	Hoeftlon C6e light	3.14	0.75-1.05	1.82	1.90	E	•	A	4.13	4.34
5810-11	Hoeftlon C6e	3.14	0.75-1.05	1.82	2.90	E	•	A	4.13	4.34
5812-14	Hoeftlon C10	3.85	0.80-1.10	1.92	4.70	D/E	•	B	4.63	4.63
5816	Hoeftlon C30e	4.12	1.17-1.87	2.00	8.70	E	•	B(A)	5.41	5.40
5817	Maeda CC423	4.02	1.74	2.50	4.50	D			1.65	1.44

	X1  @ R/HH	X2  @ R/HH	X3  @ R/HH	X4  @ R/HH
	[t] @ [m] / [m]	[t] @ [m] / [m]	[t] @ [m] / [m]	[t] @ [m] / [m]
5810	1.0 @ 2.0 / 9.5	0.4 @ 7.3 / 2.0	0.5 @ 2.0 / 13.9	0.14 @ 11.7 / 2.0
5810-11	1.1 @ 2.0 / 11.5	0.5 @ 9.2 / 2.5	0.6 @ 2.0 / 15.8	0.21 @ 13.7 / 2.0
5812-14	2.0 @ 1.8 / 16.3	0.5 @ 13.7 / 2.5	0.7 @ 2.1 / 21.3	0.25 @ 19.4 / 2.5
5816	4.0 @ 1.6 / 14.9	1.5 @ 12.2 / 0.8	1.27 @ 5.0 / 21.8	0.40 @ 20.0 / 2.0
5817	1.2 @ 1.5 / 9.4	0.2 @ 8.4 / 0.8		

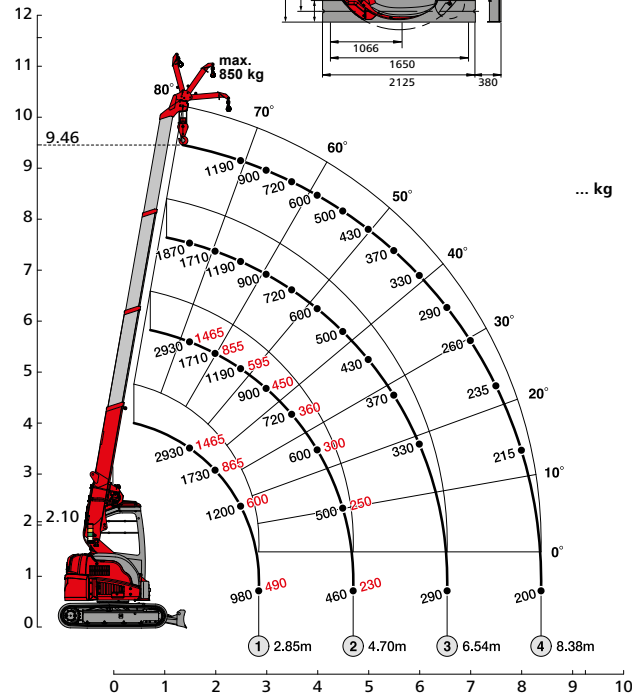
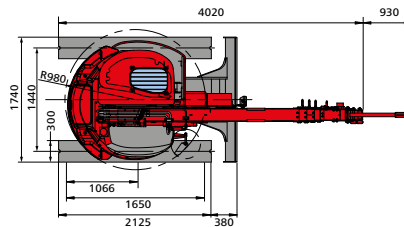
HOEFLOON C30e

8 t



MAEDA CC423

3 t



Verfahren von Lasten / charge en mouvement / load moving