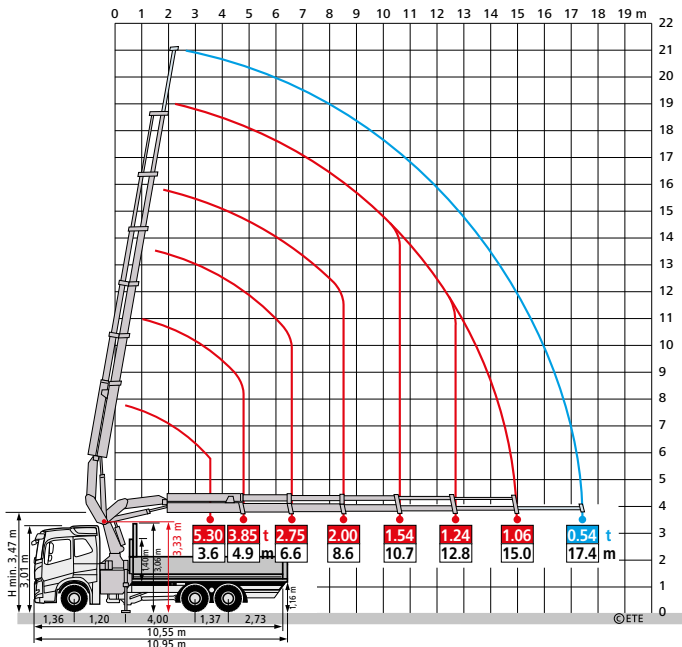


**23 mt – VOLVO FM500 6x2 672, 679**

	7,10 x 2,48 x 2,84		26,0 – 16,0 = 10,0 t				
	6,30 x 2,48 x 3,04		18,0 – 4,3 = 13,7 t				
	1671 7,10+6,30 x 2,48 x 2,84/3,04		40,0 – 20,3 = 19,7 t				



**26 mt – Scania R440 LB 661**

	7,00 x 2,48 x 2,80		26,0 – 17,7 = 8,3 t				
	1761 6,01 x 2,47 x 3,19		14,0 – 4,7 = 9,3 t				
	1761 7,00+6,01 x 2,47 x 2,80/3,19		40,0 – 22,4 = 17,6 t				
						EG, CH	

