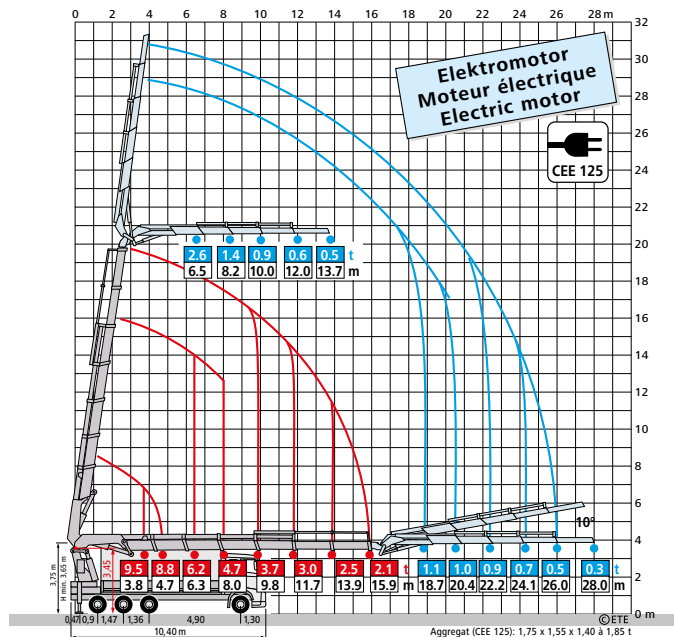


45 mt – Volvo FH 500

389

	6,30 x 2,48 x 2,90	32,0 – 22,5 = 9,5 t
	6,50 x 2,48 x 3,17	15,0 – 4,3 = 10,7 t
	6,30+6,50 x 2,48 x 2,90/3,17	40,0 – 26,8 = 13,2 t



50 mt – Volvo FH 540

842

	6,56 x 2,48 x 2,80	32,0 – 21,8 = 10,2 t
	6,56 + 6,30 x 2,48 x 2,80/3,16	40,0 – 26,1 = 13,9 t

