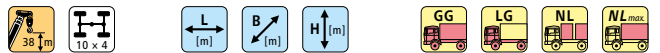
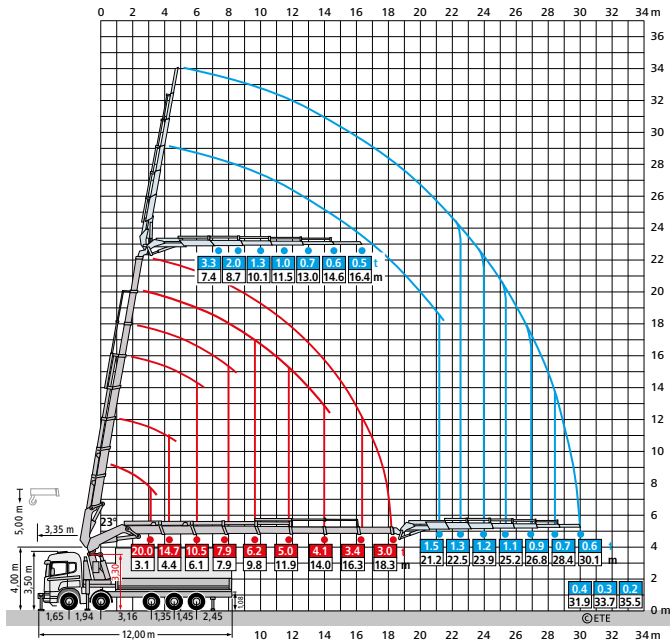


80 mt – Scania G490

380

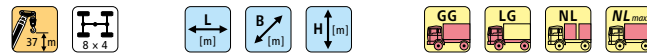


7,35 x 2,47 x 2,91      40,0 – 28,4 = 11,6 / 15,6 t



87 mt – Scania R500

840



4,80 x 2,47 x 2,83      32,0 – 27,8 = 4,2 t

1881 4,80 + 6,28 x 2,47 x 3,10      40,0 – 32,4 = 7,6 t

1870 11,72 x 2,55 x 3,07      40,0 – 36,2 = 3,8 / 26,8 t

