







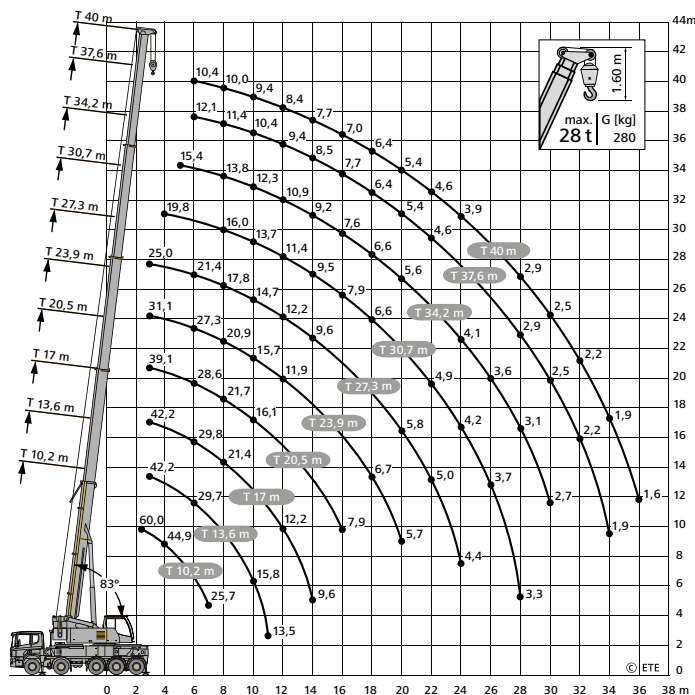
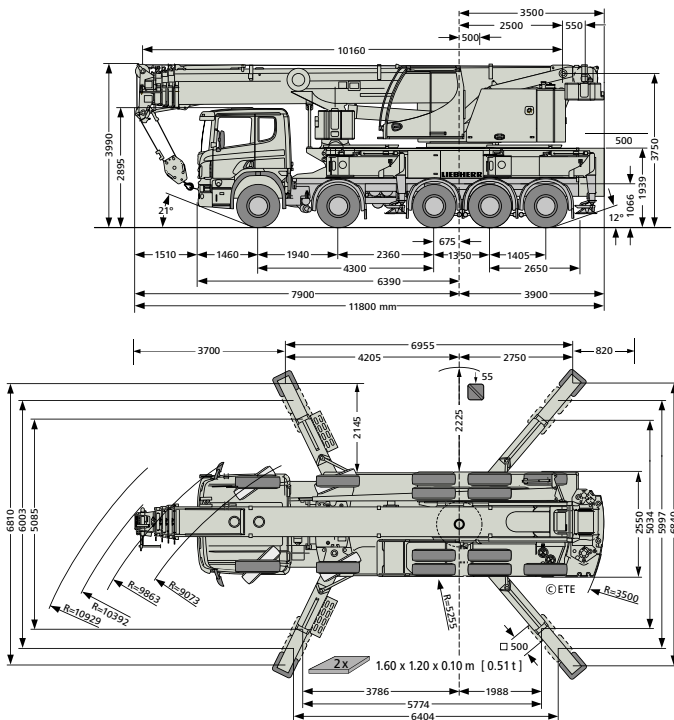









LIEBHERR LTF 1060-5.1

302

 max. 40,0 m	 9/9/8,5/8,5/9t = 44 t	 10 x 4	
 ohne sans / without	 max. 85 km/h	 10 x 6	

 10,2 - 40,0	 Liebherr LTF 1060-5.1	 1x4,5 t	 360°	 EN	 6,8 m	 10,2 t
---	--	---	--	--	---	--



 m	 10,2 - 40,0		 t		Liebherr LTF 1060-5.1															
	10,2*	10,2	13,6	17,0	20,5	23,9	27,3	30,7	34,2	37,6	40,0	 360°		 EN		 6,8 m		 10,2 t		
2,5	60,0																			
3,0	55,1	42,3	42,2	42,2	39,1	31,1	25,0													
3,5	50,3	42,3	42,3	41,4	38,5	31,3	24,8													
4,0	44,9	42,0	41,6	39,1	37,3	31,4	24,6	19,8												
4,5	40,2	38,8	38,8	36,0	33,8	31,2	24,1	19,7												
5,0	36,7	35,3	35,3	33,4	31,5	30,3	23,4	19,5	15,4											
6,0	30,5	29,4	29,7	29,8	28,6	27,3	21,4	18,5	15,1	12,1	10,4									
7,0	25,7	24,7	25,0	25,1	25,5	24,4	19,4	17,2	14,5	11,8	10,2									
8,0			21,5	21,4	21,7	20,9	17,8	16,0	13,8	11,4	10,0									
9,0	*nach hinten		18,4	18,7	18,7	18,0	16,3	14,8	13,1	10,9	9,7									
10,0	sur arriére		15,8	16,2	16,1	15,7	14,7	13,7	12,3	10,4	9,4									
11,0	over rear		13,5	13,9	13,9	13,6	13,4	12,6	11,6	9,9	8,9									
12,0				12,2	12,1	11,9	12,2	11,4	10,9	9,4	8,4									
14,0				9,6	9,6	9,9	9,6	9,5	9,2	8,5	7,7									
16,0					7,9	8,1	7,8	7,9	7,6	7,7	7,0									
18,0						6,7	6,6	6,6	6,6	6,4	6,4									
20,0						5,7	5,8	5,7	5,6	5,4	5,4									
22,0							5,0	4,9	4,8	4,6	4,6									
24,0								4,4	4,2	4,1	3,9	3,9								
26,0									3,7	3,6	3,4	3,4								
28,0									3,3	3,1	2,9	2,9								
30,0										2,7	2,5	2,5								
32,0											2,2	2,2								
34,0											1,9	1,9								
36,0	©ETE										1,6	1,6								

