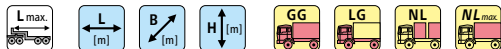


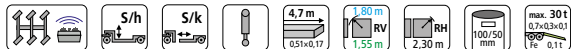
FAYMONVILLE Mega 2

1351⁺, 1382, 1276^{*}

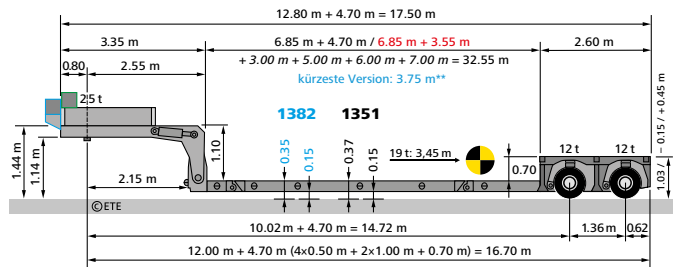
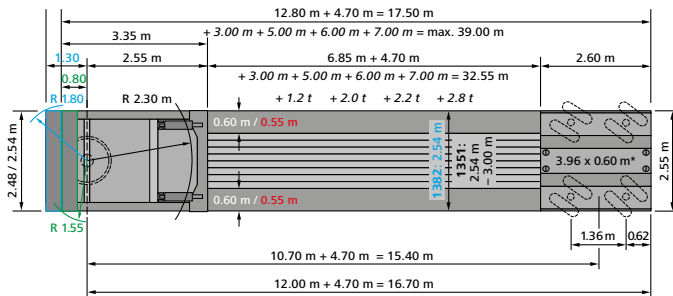


25 m 11,55 x 2,54 x 3,70 14,5 t 34,5 t

367 25 m 11,55 x 2,54 x 3,70 40,0 - 24,6 = 15,4 / 31,4 t



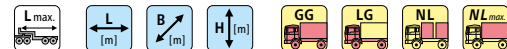
1351⁺ 1341⁺ 1346⁺ 1382
1380⁺ 1381 1383
1709 1710 1338⁺



* oben / en haut / above: 0.70 m ** NL: 20.6 t 1276^{*}: +3, +5, +5

FAYMONVILLE Mega 3

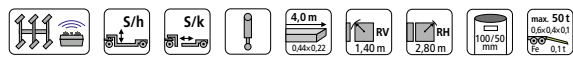
1377⁺, 1353⁺, 1348⁺



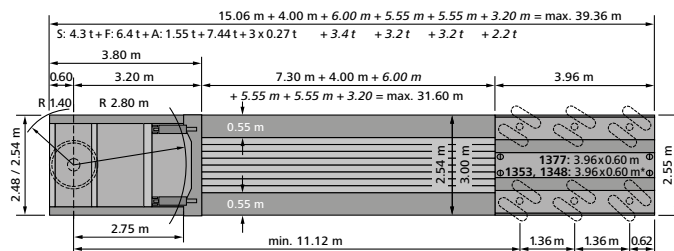
31 m 31,60 x 2,55 x 3,68 20,5 t 49,5 t

376 31 m 31,60 x 2,55 x 3,68 40,0 - 33,0 = 7,0 / 45,0 t

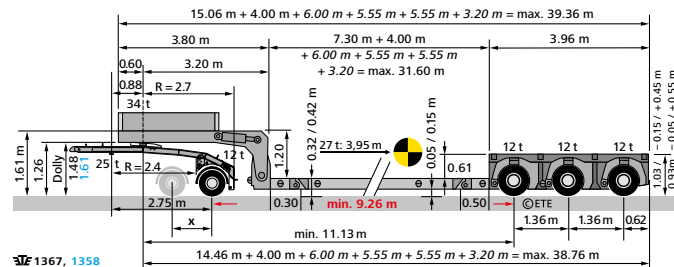
376 31 m 31,60 x 2,55 x 3,68 40,0 - 36,0 = 4,0 / 49,5 t



1377: 3.96x0.60 m
1348: 3.96x0.60 m
max 50t 0.6x0.4x0.1 Fe 0.1t



* oben / en haut / above: 0.70 - 1.25 m



3167, 1358
 V338: 1,17 m / V345: 1,22 m / V353: 1,17 m / V362: 1,15 m (Pos. 5) / V363: 1,19 m (Pos. 6) / V376: 1,20 m
 x = 338: 1.58 m / 345: 1.53 m / 353: 1.58 m / 362: 1.64 m / 363: 1.60 m / 376: 1.55 m